



Creating FSA/HSA Login with 24HourFlex

- 1) Go to www.24hourflex.com
- 2) Click on the **FSA Login** button in the middle of the main page or from the **Participants** section.
- 3) From the MyFlexOnline screen click on the **NEW USER** Link on the middle right side of the page.
- 4) Fill out the form with your SSN, DOB, a valid e-mail address as well as a username and password (make sure to read the required password criteria). Once you have filled out everything click the **Continue** button at the bottom of the page.

Logging into your FSA/HSA Account with 24HourFlex

- 1) Go to www.24hourflex.com
- 2) Click on the **FSA Login** button in the middle of the main page or from the **Participants** section.
- 3) From the MyFlexOnline screen enter your **User Name** and **Password** and click the **Login** Link.

www.24hourflex.com

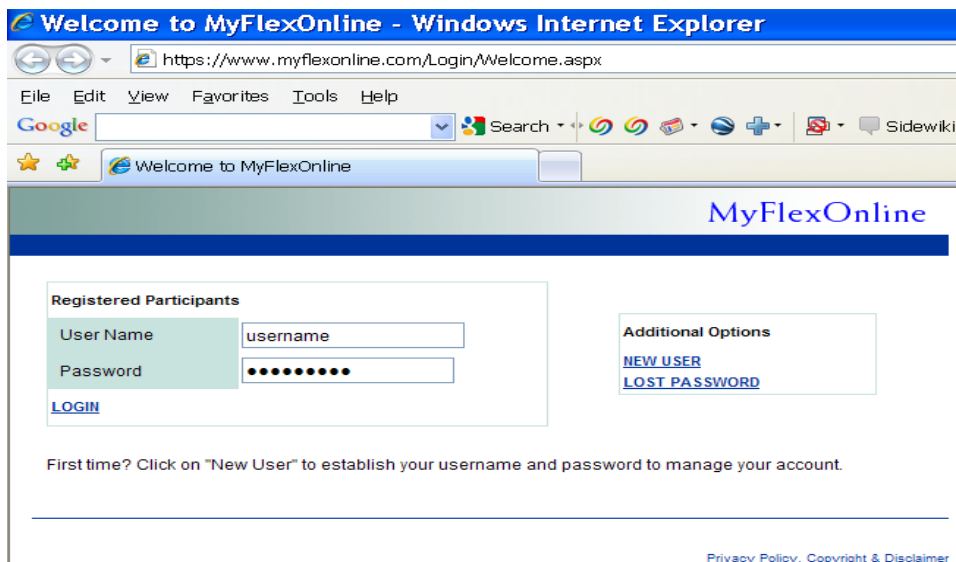
Customer Service: 1-800-651-4855 x 5 | info@24hourflex.com

Setting up link between MyFlexOnline and your HSA bank account

- 1) Go to www.24hourflex.com
- 2) Click on the **FSA Login** button in the middle of the main page or from the **Participants** section.



- 3) From the MyFlexOnline screen enter your **User Name** and **Password** and click the **Login** Link.



www.24hourflex.com

Customer Service: 1-800-651-4855 x 5 | info@24hourflex.com

- 4) From the **View Account** tab click on the **VIEW** button under **Account Details** for your HSA benefit.

MyFlexOnline Log Out

View Account Request Payment Flex Debit Card User Info Contact Us Help

Account Summary Pending Payments Completed Payments Rejected Card Swipes

Account Summary

Welcome [Redacted]

Benefit Account	Available Balance Current Year	Available Balance Previous Year	Account Qualified Details	Expenses
HRA - Unreimbursed Medical	\$0.00	N/A	VIEW	VIEW
HSA	\$596.20	N/A	VIEW	VIEW

View my statement [Both Years](#) [Current Year](#) [Previous Year](#)

Get Adobe Reader

Current as of 1/24/2010 7:31:37 PM

[Privacy Policy](#) | [Copyright & Disclaimer](#)

- 5) From the **Account Details – HSA** screen Click on the **Account Details** link on the left hand side of the page.

MyFlexOnline Log Out

View Account Request Payment Flex Debit Card User Info Contact Us Help

Account Summary Pending Payments Completed Payments Rejected Card Swipes

Account Detail - HSA

Info & Forms

Acct #: ***[Redacted]
Status: Active

Account Details

Spender Saver [Update](#)

Spender or Saver?
This option lets you manage your HSA balance for the future by controlling withdrawals from your account.

- Spender makes your HSA dollars available on your Flex Benefit card
- Saver makes your HSA balance available only when you make a specific cash request directly from your HSA account

[Request cash from your HSA](#)

	Current Year	Previous Year
Available Balance	\$596.20	N/A
Annual Election	\$0.00	N/A
Deposits to Date	\$700.00	N/A
Paid to Date	\$103.80	N/A
Last Date Paid	N/A	N/A
Last Paid Amount	\$0.00	N/A
Plan Year Start	1/1/2010	N/A
Plan Year End	12/31/2010	N/A
Plan Extended Date	N/A	N/A
Final Claims Deadline	12/31/2010	N/A
Date Termed	N/A	N/A
View Qualified Expenses	VIEW	

[Back](#) [Home](#) [Next](#)

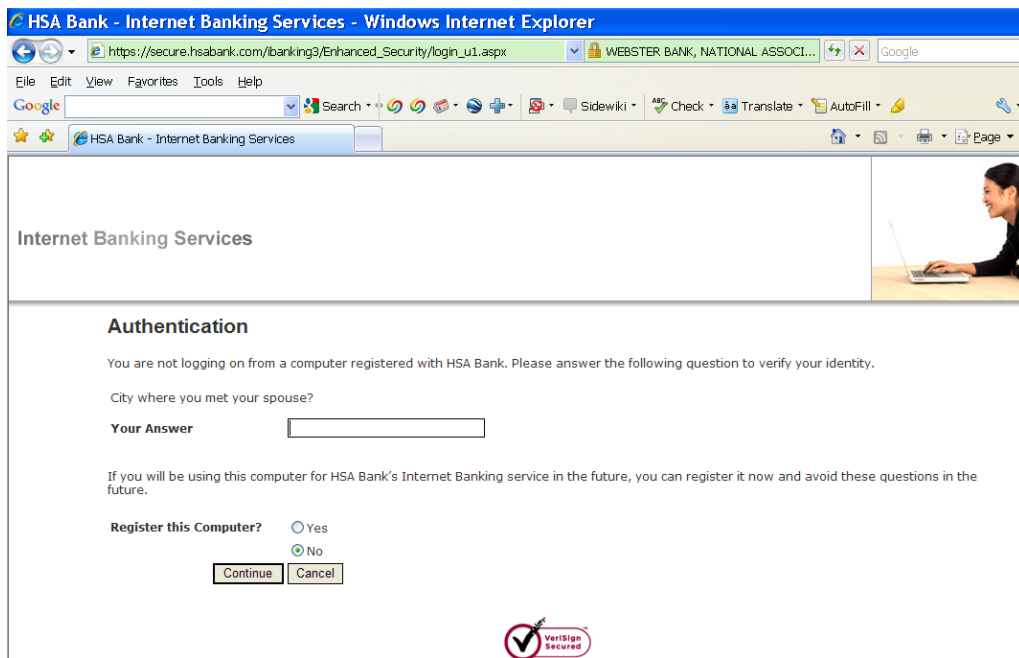
Current as of 1/24/2010 7:31:37 PM

[Privacy Policy](#) | [Copyright & Disclaimer](#)

www.24hourflex.com

Customer Service: 1-800-651-4855 x 5 | info@24hourflex.com

- 6) If this is your first time creating a link between MyFlexOnline and HSA bank you will need the following (follow instructions to get your account setup):
- Your HSA Bank account number (should be on a welcome letter you received from HSA bank).
 - A new user name and password (not the same as the one you use for MyFlexOnline).
 - Other personal information.
 - Answers to security questions that will be used in the future so you do not have to provide a username/password when linking from MyFlexOnline to HSA Bank.
- 7) If you have already created a link to HSA bank you will be prompted to answer a security question in order to transfer to your account.

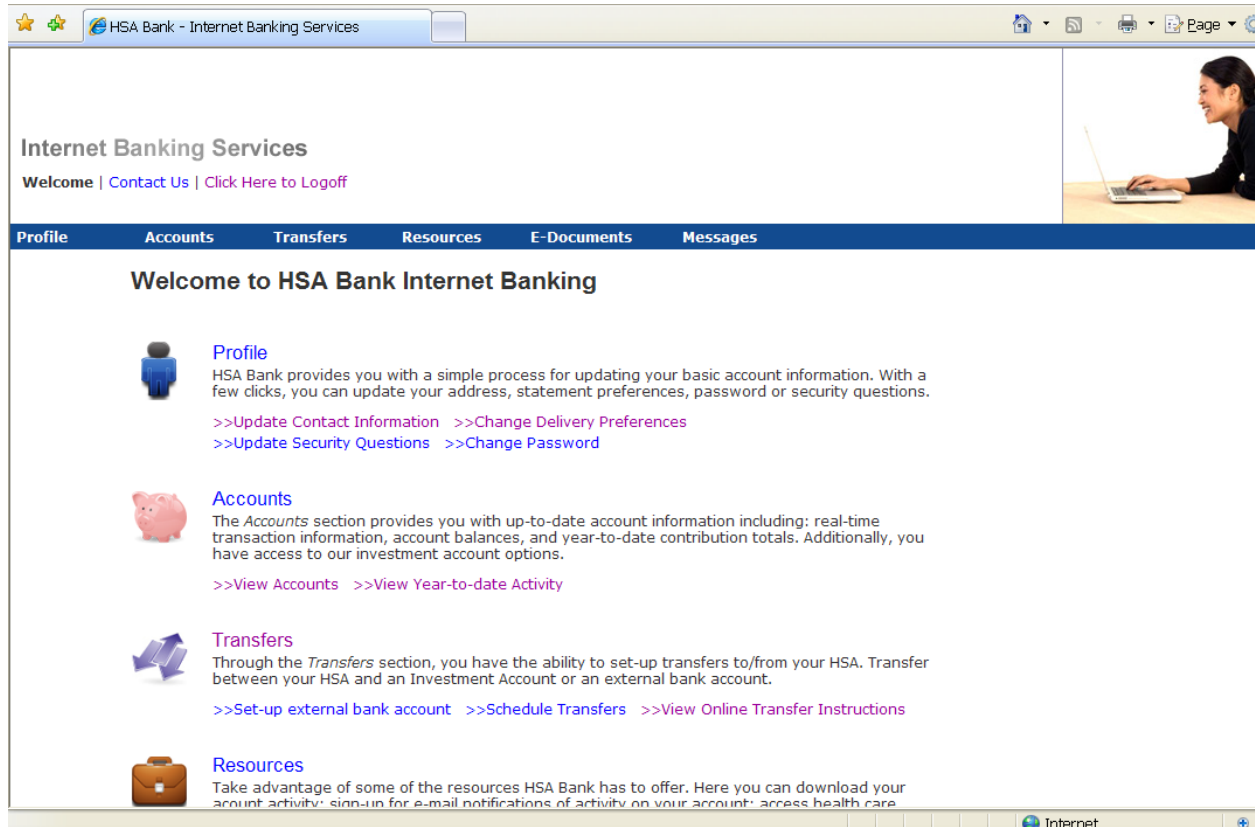


The screenshot shows a Windows Internet Explorer browser window with the address bar displaying https://secure.hsabank.com/ibanking3/Enhanced_Security/login_u1.aspx. The page title is "HSA Bank - Internet Banking Services". The main content area is titled "Internet Banking Services" and features a security question under the heading "Authentication". The text reads: "You are not logging on from a computer registered with HSA Bank. Please answer the following question to verify your identity." The question is "City where you met your spouse?". Below the question is a text input field labeled "Your Answer". Further down, there is a question "Register this Computer?" with radio buttons for "Yes" and "No". At the bottom of the form are "Continue" and "Cancel" buttons. A VeriSign Secured logo is visible at the bottom center of the page.

www.24hourflex.com

Customer Service: 1-800-651-4855 x 5 | info@24hourflex.com

- 8) Once logged in you will be able to perform many tasks such as:
- Updating your contact information
 - View additional account/transaction details
 - Initiate transfers from your HSA bank account to another checking/savings account.



www.24hourflex.com

Customer Service: 1-800-651-4855 x 5 | info@24hourflex.com